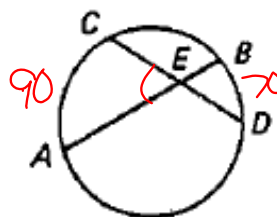
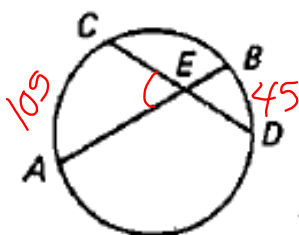


$$\begin{aligned} m\widehat{BD} &= 110 & m\angle EBD &= 25 \\ m\angle BFE &= 80 & m\angle DBC &= 55 \end{aligned}$$

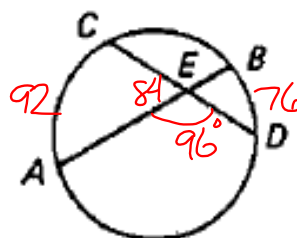


13. If $m\widehat{BD} = 70$ and $m\widehat{AC} = 90$, $m\angle AEC = 80$.

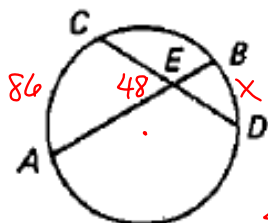


14. If $m\widehat{BD} = 45$ and $m\widehat{AC} = 105$, $m\angle AEC = 75$.

$$\begin{array}{r} 105 \\ + 45 \\ \hline 150 \end{array}$$



16. If $m\widehat{BD} = 76$ and $m\widehat{AC} = 92$, $m\angle AED = 84$.

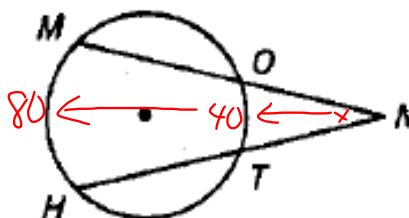


$m\angle CEA = 48$

$m\widehat{AC} = 86$

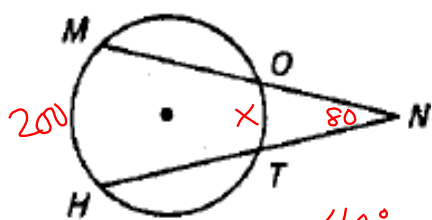
$m\widehat{BD} =$

$$\begin{aligned} 48 &= \frac{1}{2}(86 + x) \\ 96 &= 86 + x \\ 10 &= x \end{aligned}$$

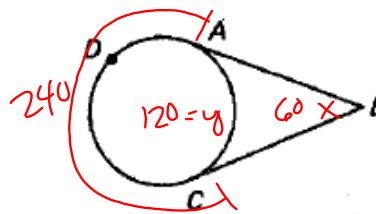


19. If $m\widehat{MH} = 80$, $m\widehat{OT} = 40$, $m\angle N = 20$.

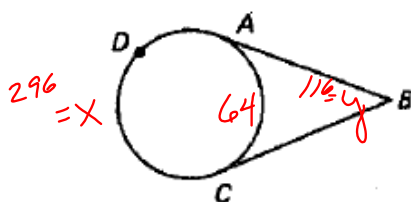
$$\frac{1}{2}(80 - 40)$$



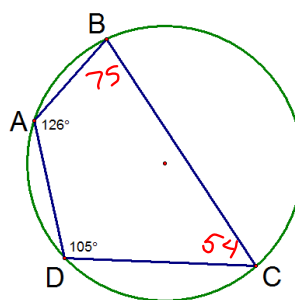
21. If $m\angle N = 80$, $m\widehat{MH} = 200$, $m\widehat{OT} = \underline{40^\circ}$.
 $80 = \frac{1}{2}(200 - x)$



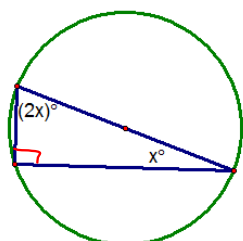
23. If $m\widehat{ADC} = 240$, $m\widehat{AC} = \underline{\hspace{2cm}}$, and $m\angle B = \underline{\hspace{2cm}}$.



24. If $m\widehat{AC} = 64$, $m\widehat{ADC} = \underline{\hspace{2cm}}$, and $m\angle B = \underline{\hspace{2cm}}$.



$m\angle C = \underline{\hspace{2cm}}$
 $m\angle B = \underline{\hspace{2cm}}$



$x + 2x = 90$
 $x = 30$

